



Fitzroy Close, Coventry, CV2 2BJ

**SHELDON
BOSLEY
KNIGHT**

LAND AND
PROPERTY
PROFESSIONALS

Property Description

*** AVAILABLE NOW - DEPOSIT ALTERNATIVE AVAILABLE *** A welcoming and well-presented three-bedroom home situated in a quiet cul-de-sac, offering excellent access to local amenities, University Hospital Coventry, and convenient transport links including the motorway network.

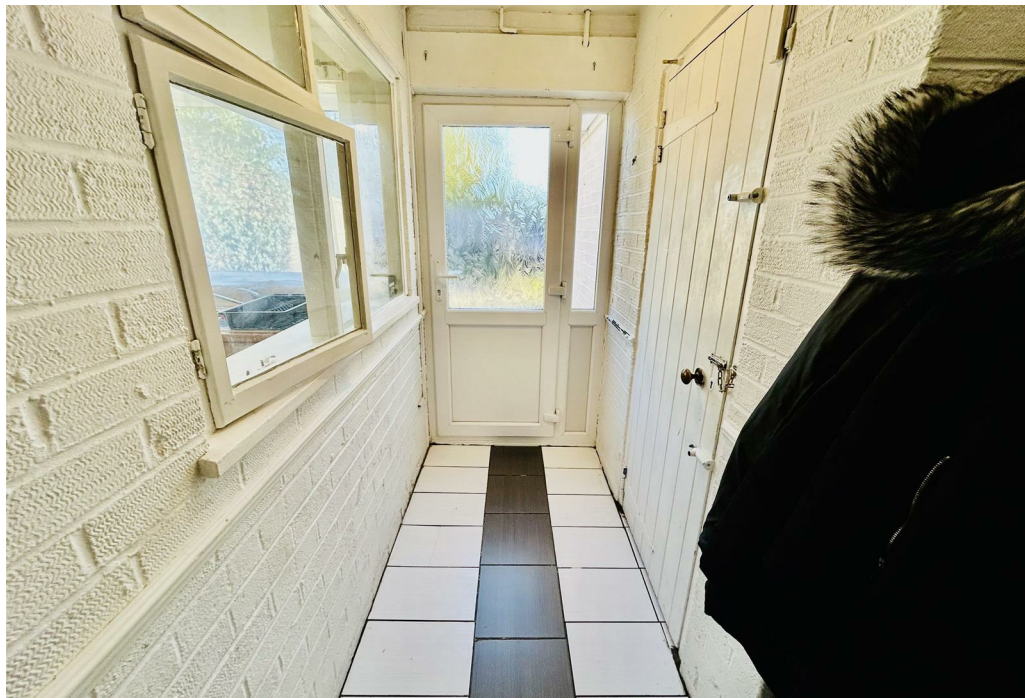
The property comprises a front reception room leading through to a spacious lounge/dining area, along with a modern fitted kitchen complete with integrated oven and hob. There is also a separate rear hallway providing access to the garden.

Upstairs offers three double bedrooms and a modern family bathroom with bath and shower over.

Externally, the property benefits from a private rear garden.

Offered UNFURNISHED. Council Tax Band B. Energy Rating D.







Key Features

- Available Start of January
- Walsgrave
- Three Bedrooms
- End Terrace
- Unfurnished
- Rear Garden
- Off Road Parking
- Council Tax Band B
- Energy Rating D

£1,100 PCM